

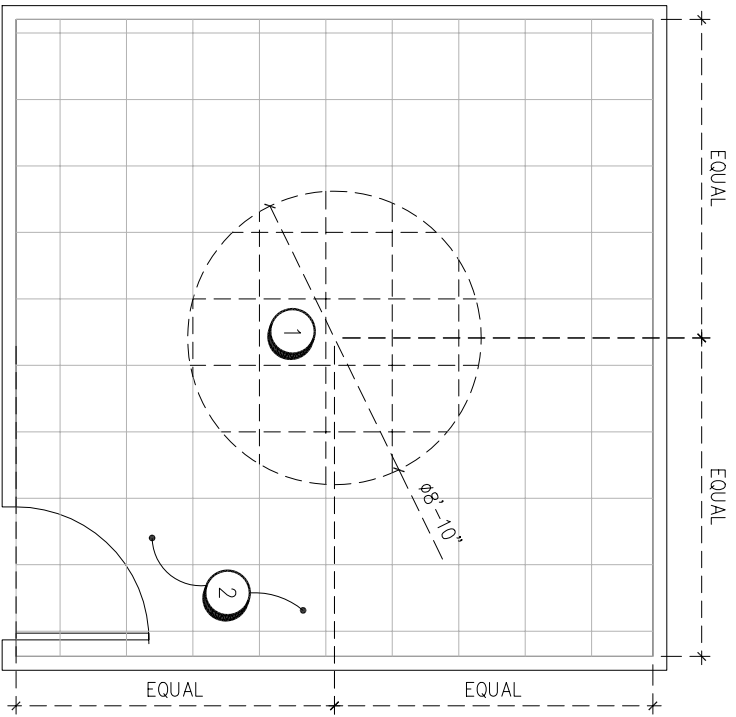
Construction for the TESS Illuminated Art Panels



PHONE: 800.658.8377
281.361.8377
FAX: 281.361.9055
EMAIL: ERNESTO@TESSUSAINC.COM

PROJECT DESCRIPTION

THIS IS A DESIGN BUILD PROJECT FOR THE INSTALLATION OF THE TESS ILLUMINATED PANELS INTO AN EXISTING CEILING. THE SCOPE OF WORK INCLUDES; MINOR DEMOLITION, RELOCATION OF ANY EXISTING UTILITIES, MINOR CONSTRUCTION & INSTALLATION OF THE PANELS W/ FINAL ELECTRICAL CONNECTIONS. THE CONTRACTOR IS RESPONSIBLE FOR COMPLYING WITH ALL APPLICABLE CODES, OBTAINING ANY PERMITS OR INSPECTIONS IF NECESSARY, AND COMPLYING WITH THE OWNER'S REP/FIRE MARSHALL'S GUIDELINES. THE PLAN IN THIS SET IS A GENERAL REPRESENTATION OF THE ROOM SIZE/LAYOUT FOR A INSTALLATION OF TESS ILLUMINATED ART PANELS. THE "CIRCLE" IS ALWAYS CENTERED NORTH TO SOUTH & WEST TO EAST IN THE ACTUAL ROOM LAYOUT.



DEMOLITION PLAN

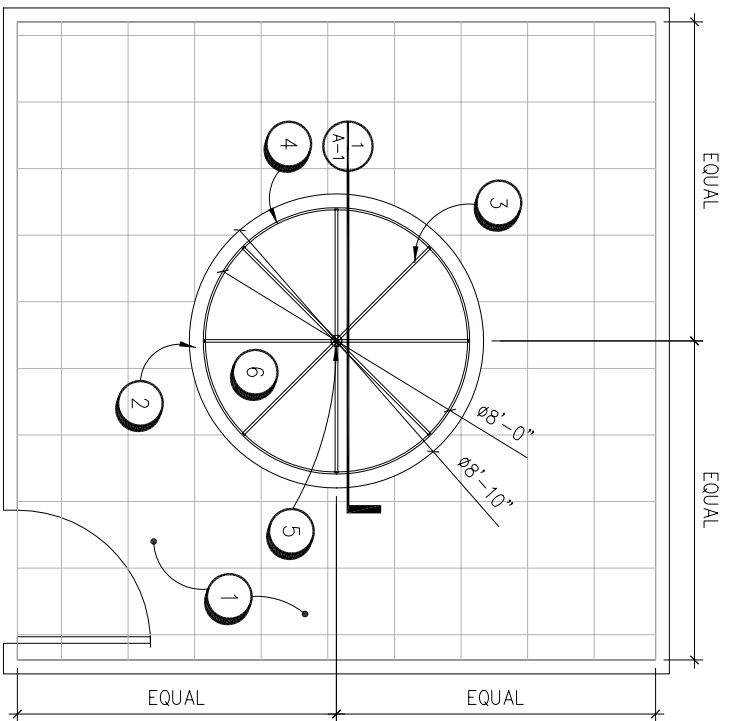
SCALE: 1/4" = 1'-0"

DEMOLITION GENERAL NOTES

1. THE CONTRACTOR IS RESPONSIBLE FOR ANY SPRINKLER RELOCATION THAT IS NEEDED. THE SPRINKLER SUBCONTRACTOR MUST BE APPROVED BY THE OWNER'S REP.
2. SALVAGE THE CEILING GRID, CEILING TILES & LIGHTS FROM THE AREA DEMOLISHED FOR PATCHING TO THE NEW ILLUMINATED CEILING ASSEMBLY.
3. PROVIDE SUITABLE BARRICADES/TEMPORARY PARTITIONS/NEGATIVE AIR PRESSURE TO CONTAIN DUST FROM DEMOLITION WITHIN PROJECT SPACE.

DEMOLITION KEY NOTES

- ① REMOVE A 8'-10" Ø OF CEILING GRID, TILE, LIGHTS AND DIFFUSERS AS REQUIRED.
- ② EXISTING SUSPENDED CEILING TO REMAIN.



CONSTRUCTION PLAN

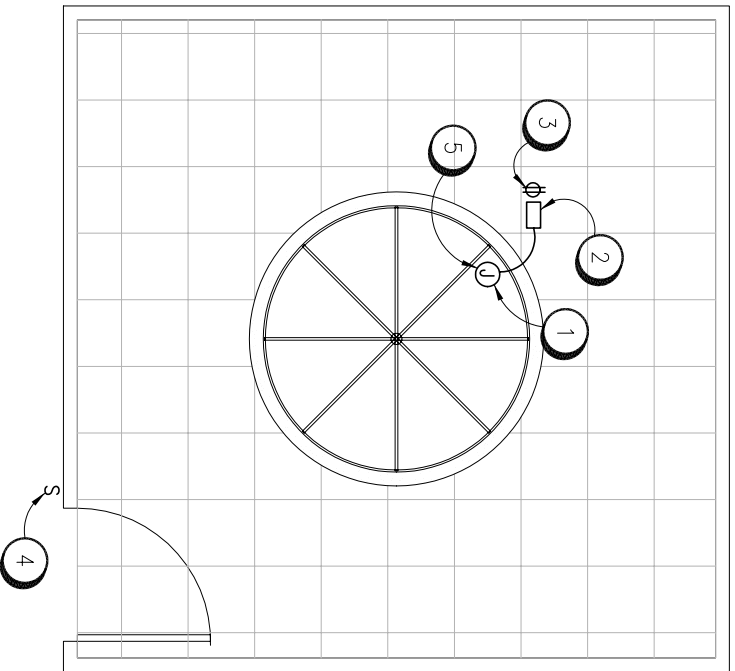
SCALE: 1/4" = 1'-0"

CONSTRUCTION GENERAL NOTES

1. EXISTING LIGHTS ARE NOT SHOWN.
2. ROOM SHALL HAVE ADEQUATE SUPPLY & EXHAUST(CONTRACTOR'S RESPONSIBILITY TO MAINTAIN).
3. ILLUMINATED ART PANEL PACKAGE SUPPLIED BY TESS(THERAPEUTIC ENVIRONMENTAL SOLUTIONS).
4. CONTRACTOR IS RESPONSIBLE FOR MAINTAINING THE EXISTING FOOT CANDLE COUNT IN THE ROOM AFTER THE ILLUMINATED ART PANELS ARE INSTALLED.
5. SEE 2/A-1 FOR THE TESS ILLUMINATED ART PANEL SIZE.

CONSTRUCTION KEY NOTES

- 1 EXISTING SUSPENDED CEILING.
- 2 NEW CIRCULAR DRYWALL BULKHEAD, SEE SECTION FOR DIMENSIONS.
- 3 NEW GRID TYP. INSIDE CIRCULAR BULKHEAD. SPEC.-ARMSTRONG; PRELUDE ML 15/16" EXPOSED TEE SYSTEM-ALUMINUM(OR EQUIV.); SECURED TO SLAB ABOVE USING CEILING HANGARS.
- 4 NEW PERIMETER TRIM TYPICAL. SPEC.-ARMSTRONG; AXIOM FAMILY - PERIMETER TRIMS STYLE: CLASSIC CURVED W/ T-BAR CONNECTOR CLIP FOR "T-S"-ALUMINUM(OR EQUIV.).
- 5 4" DIAMETER ALUMINUM PLATE, POWDER COATED WHITE TO MATCH CLG. GRID. SECURED TO GRID W/ WHITE RIVET(PLATE IS FOR AESTHETIC PURPOSES ONLY).
- 6 TESS ILLUMINATED ART PANELS TYPICAL. SEE INSTALLATION INSTRUCTIONS ENCLOSED IN PACKAGE.



ELECTRICAL PLAN

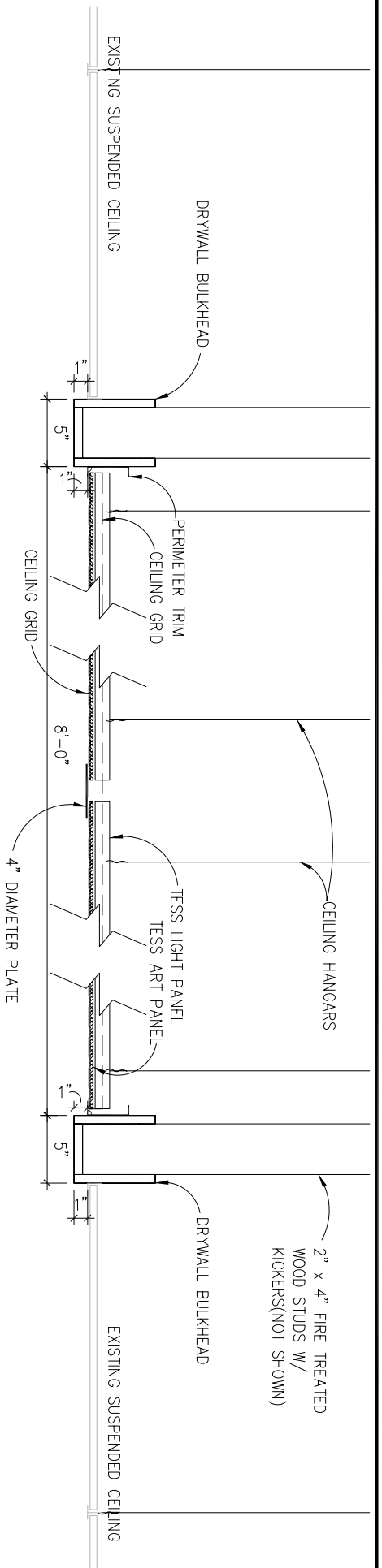
SCALE: 1/4" = 1'-0"

ELECTRICAL GENERAL NOTES

1. THE CONTRACTOR IS RESPONSIBLE FOR ALL ASPECTS OF THE ELECTRICAL WORK. THE PLAN PROVIDED IS FOR GENERAL REFERENCE ONLY.

ELECTRICAL KEY NOTES

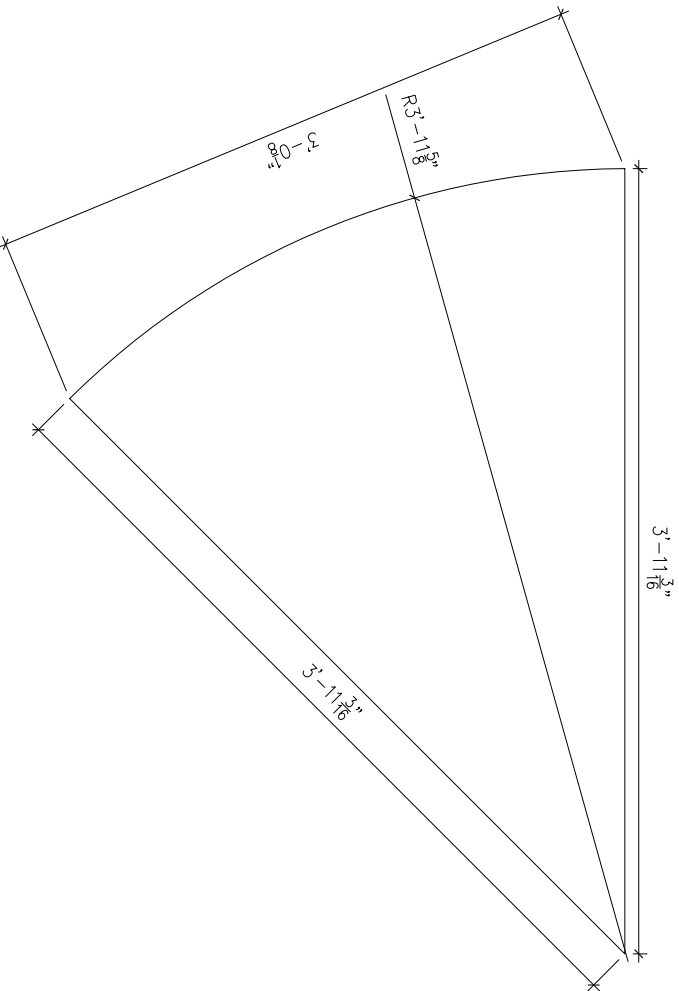
- 1 MAKE ALL FINAL CONNECTIONS TO THE ILLUMINATED PANELS.
- 2 VOLTAGE INVERTER FOR LUMINOUS CEILING PANEL MOUNTED ABOVE CEILING. COORDINATE EXACT LOCATION WITH LUMINOUS PANEL PIGTAILS.
- 3 INSTALL RECEPTACLE ABOVE THE FINISHED CEILING ADJACENT TO THE VOLTAGE INVERTER.
- 4 TO POWER FILTER SERVING THE VOLTAGE INVERTER FOR LUMINOUS CEILING PANEL.
- 5 NEW JUNCTION BOX.



* ALL MATERIALS ARE NEW UNLESS OTHERWISE NOTED*

1 NEW CEILING ASSEMBLY SECTION

SCALE: 1 1/2" = 1'-0"



2 ILLUMINATED ART PANEL SIZE

SCALE: 1 1/2" = 1'-0"